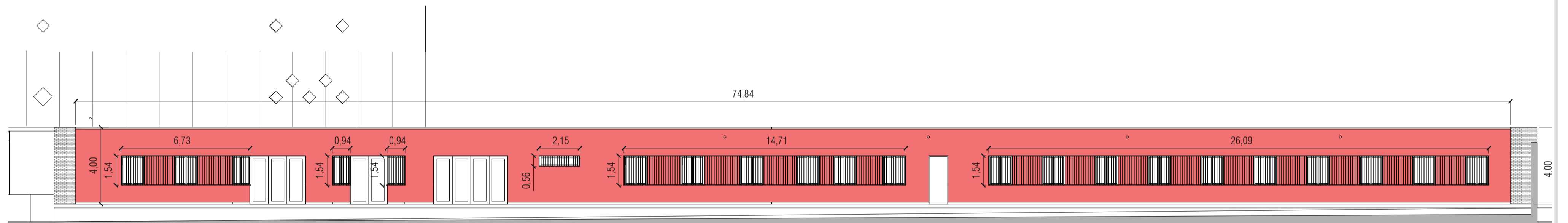


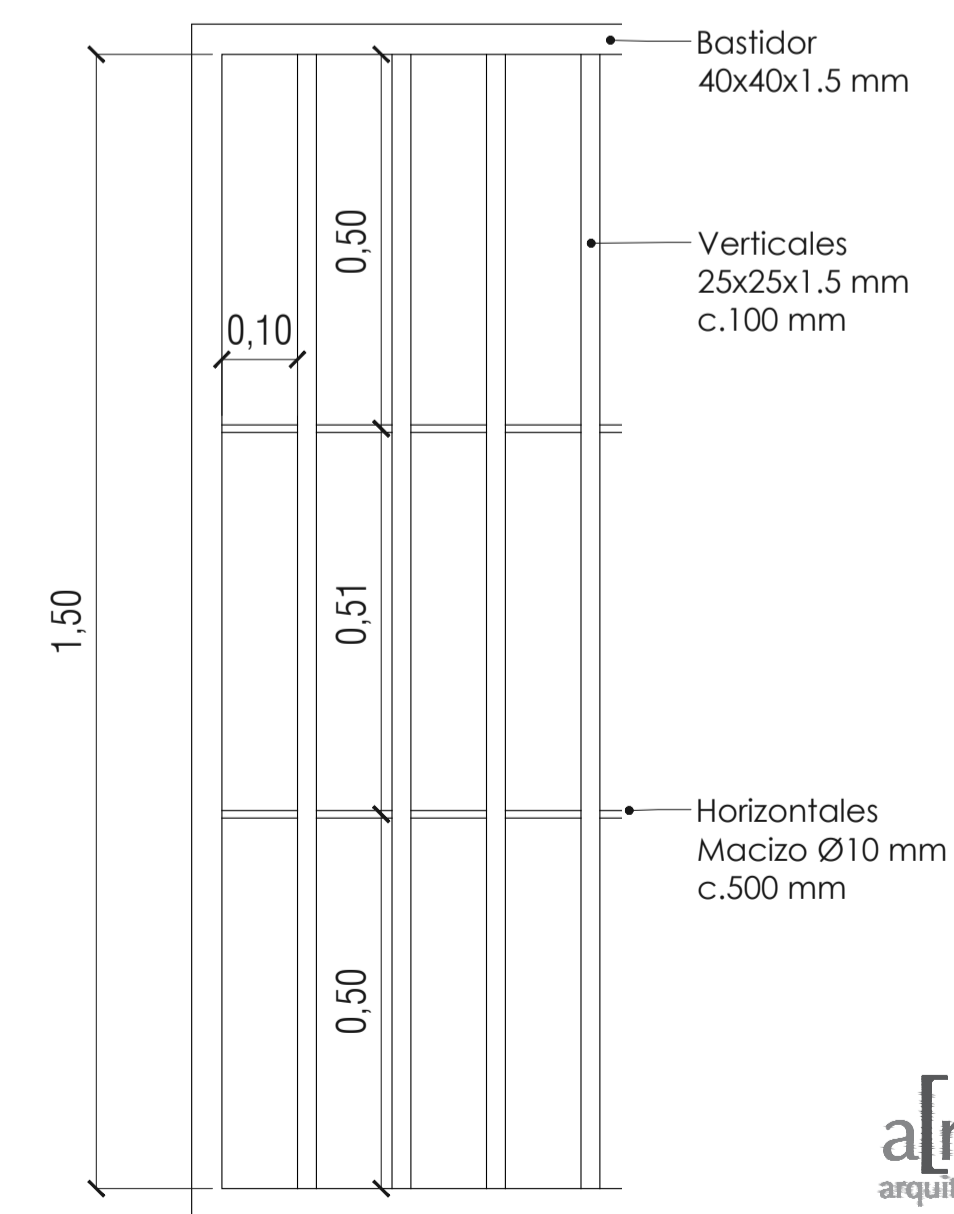
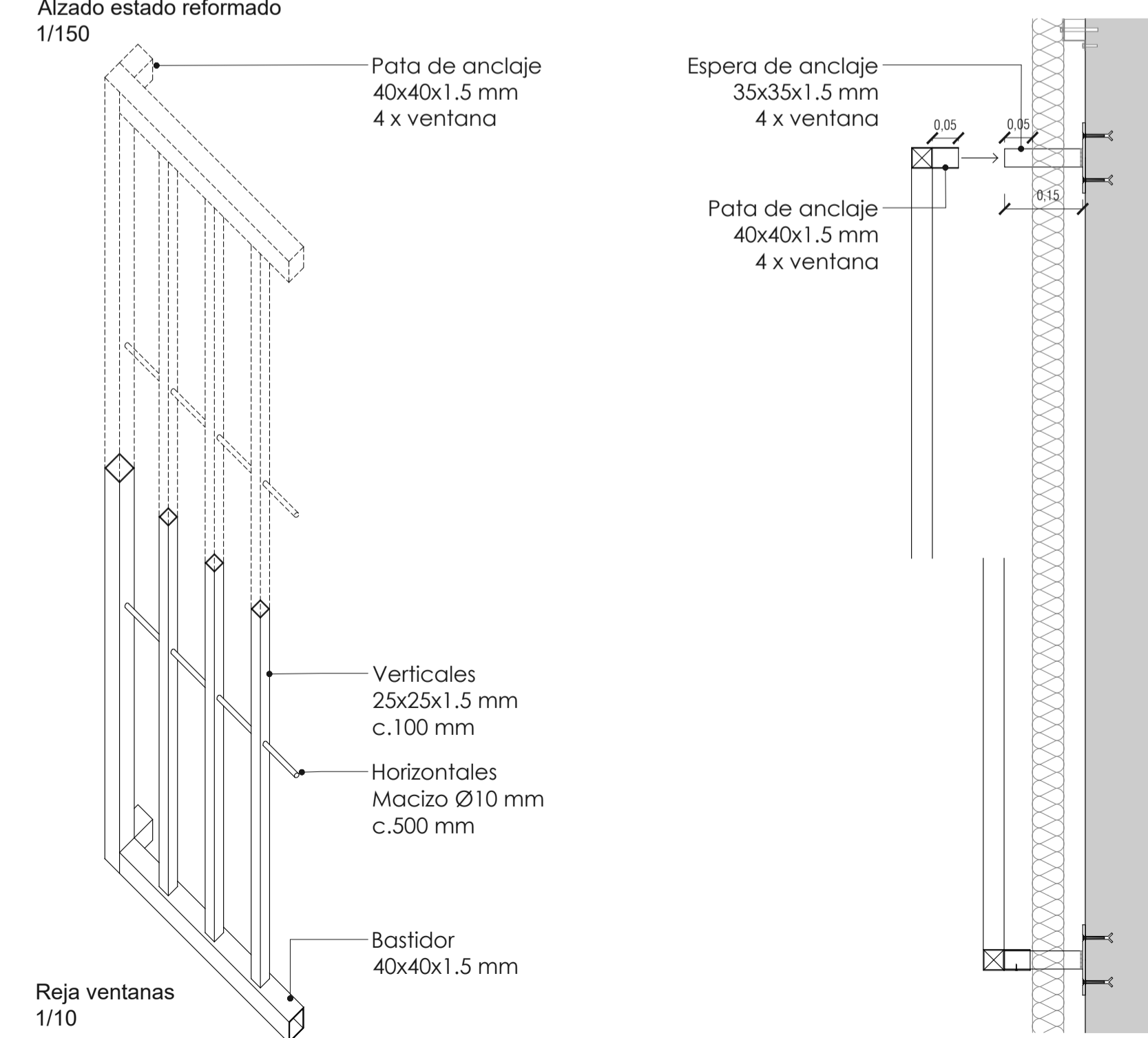
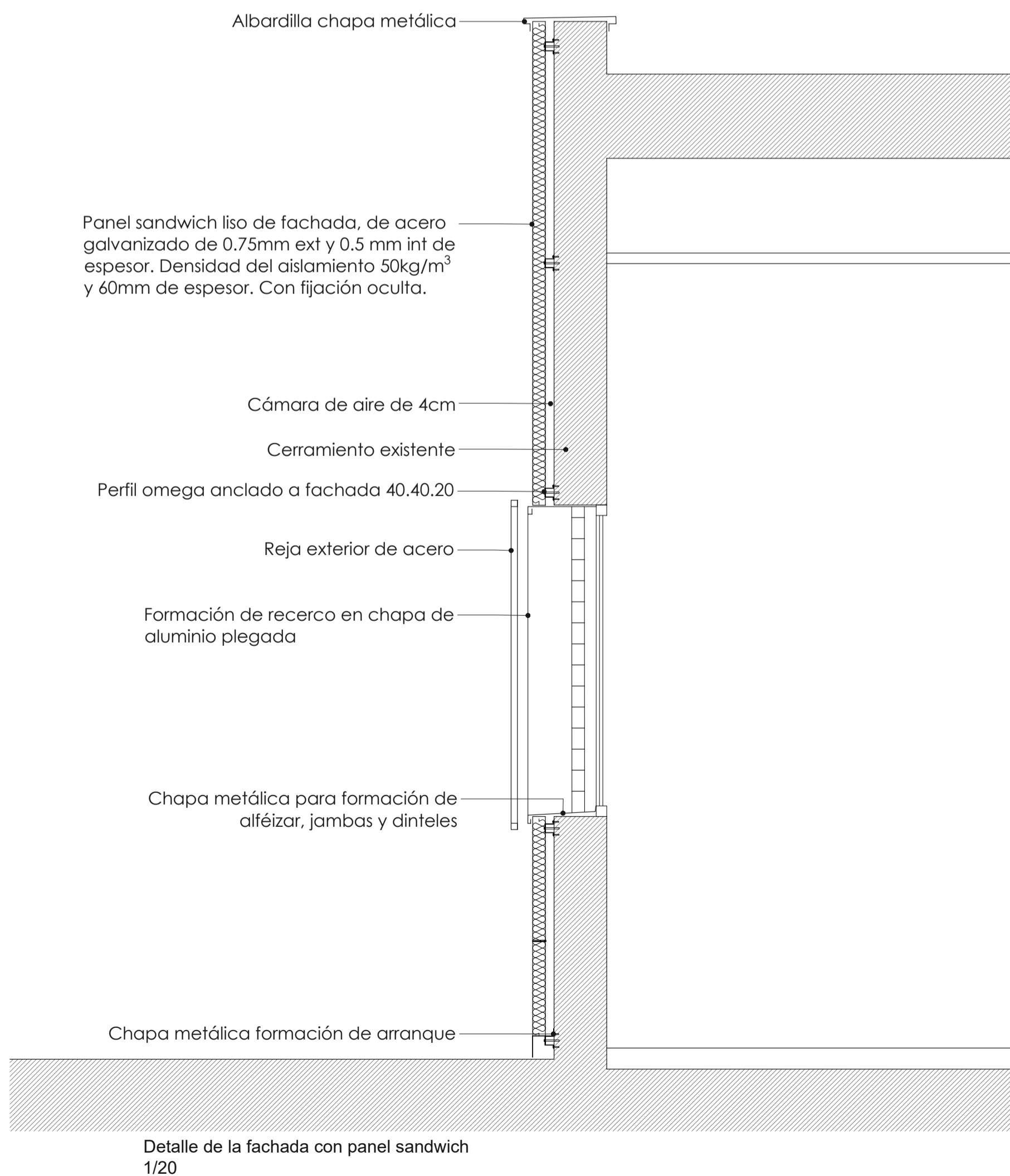
Fotografías del estado actual

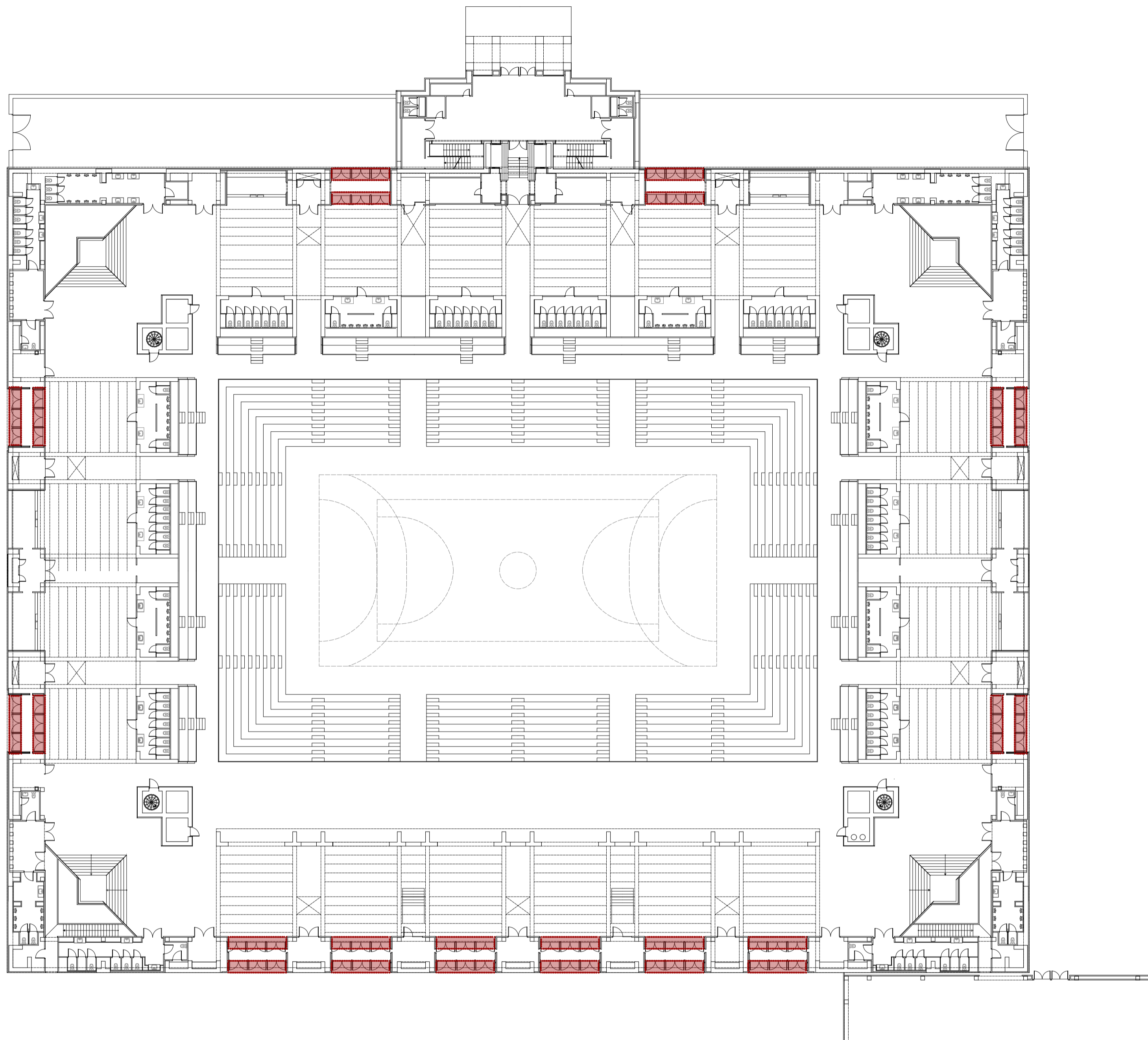


Alzado estado actual
1/150

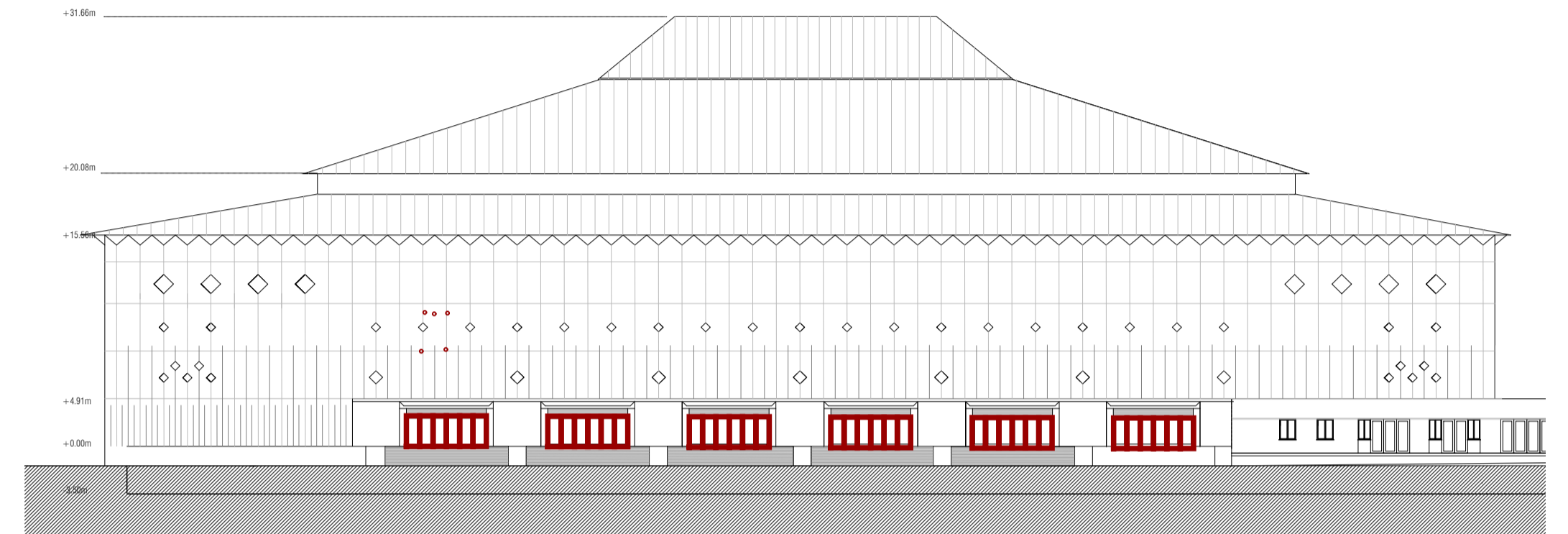


Alzado estado reformado
1/150

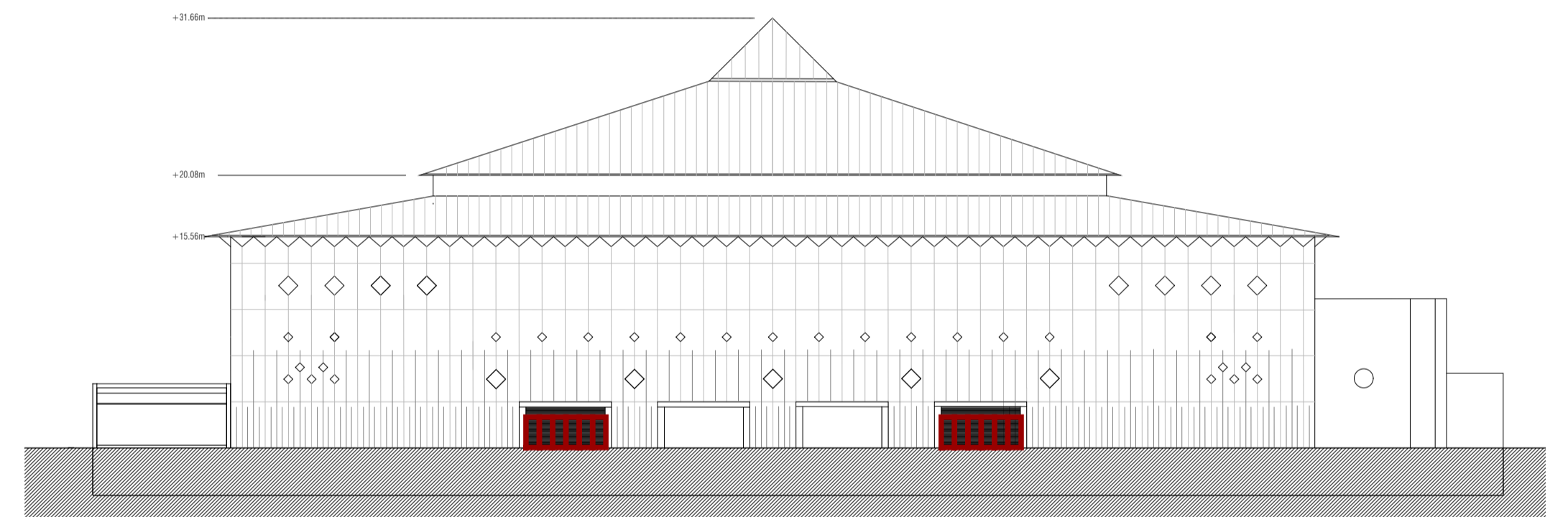




Alzado Este
1/300

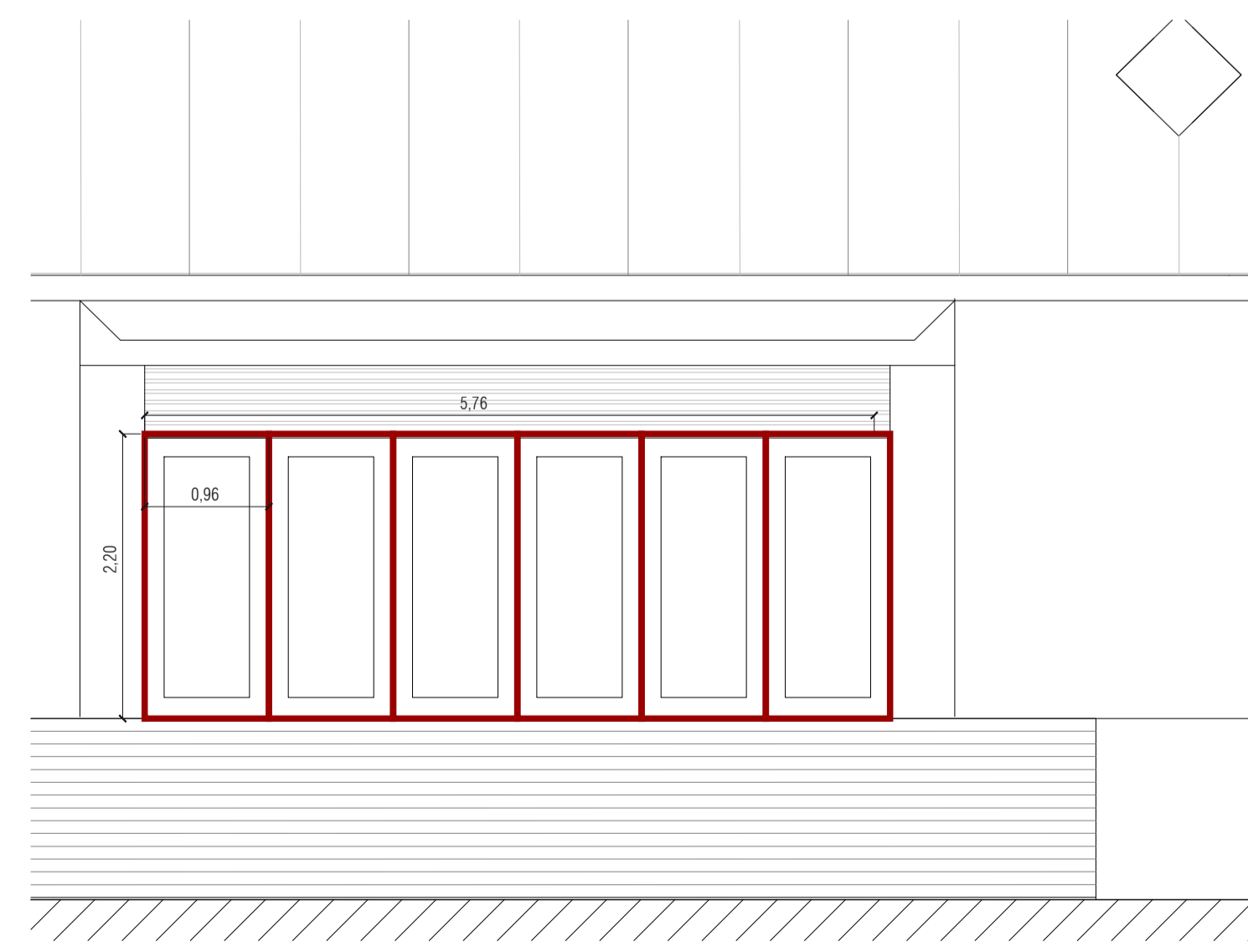


Alzado Oeste
1/300

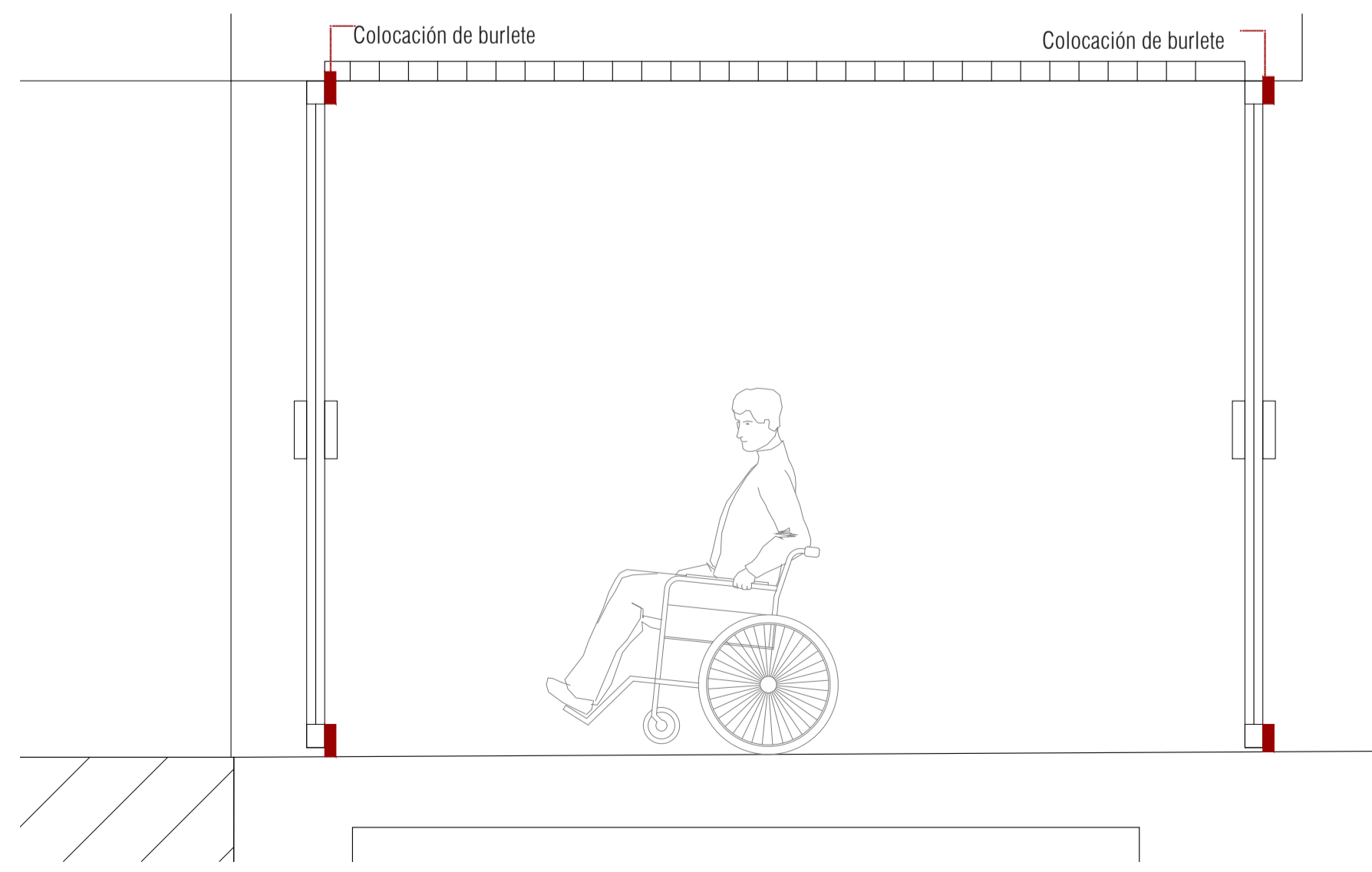


Alzado Norte y Sur
1/300

Planta baja: puertas a reparar
1/300



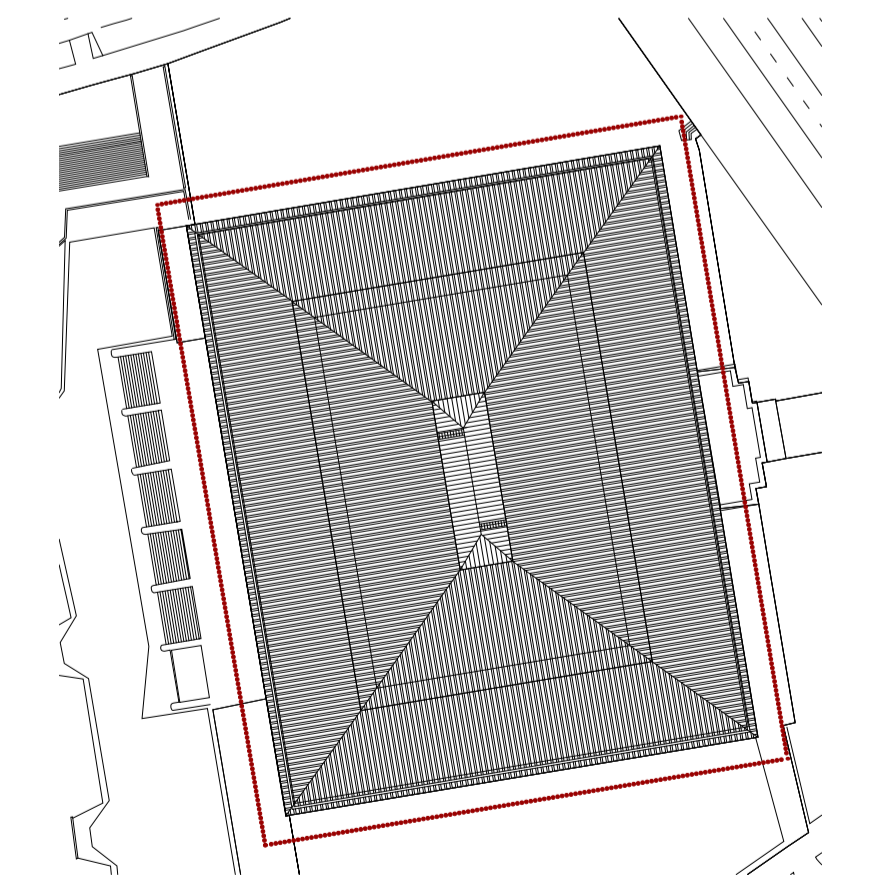
Colocación de burlate en todas las puertas
72 puertas exteriores
72 puertas interiores

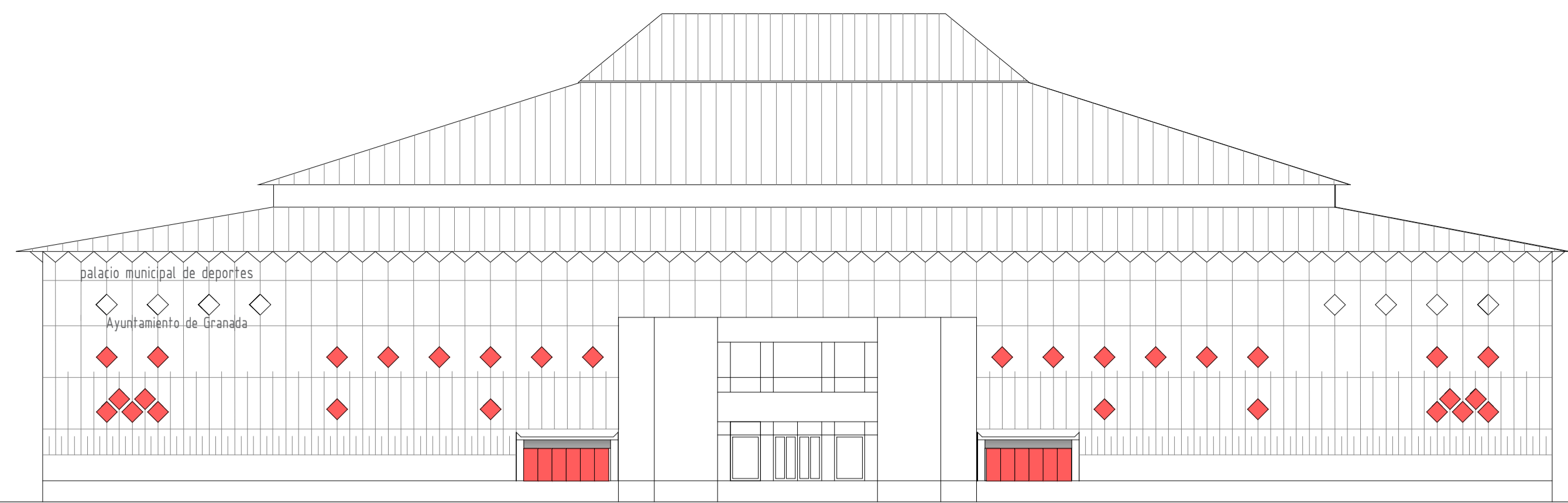


Sección por cortavientos

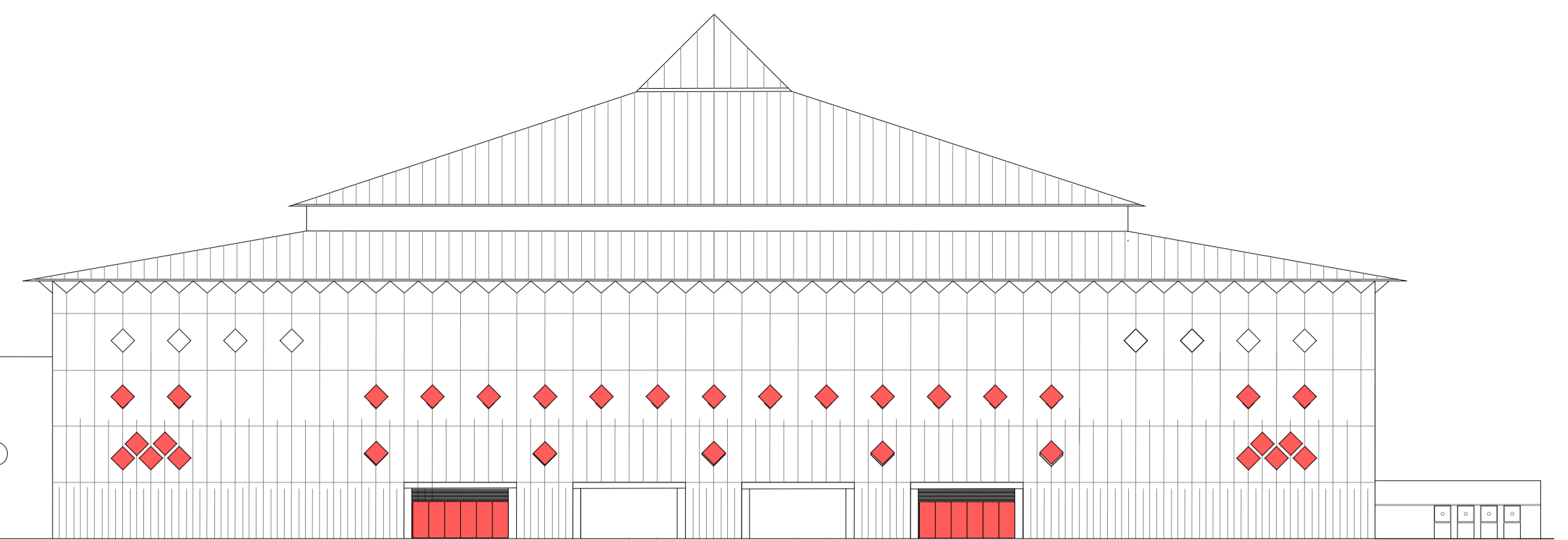


Imagen actual de las puertas

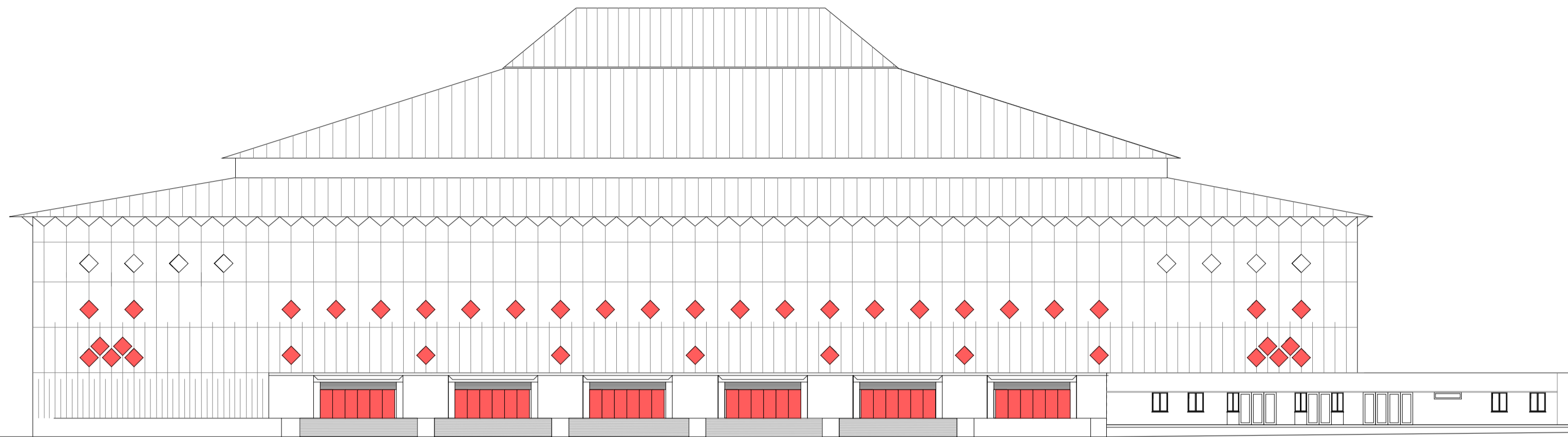




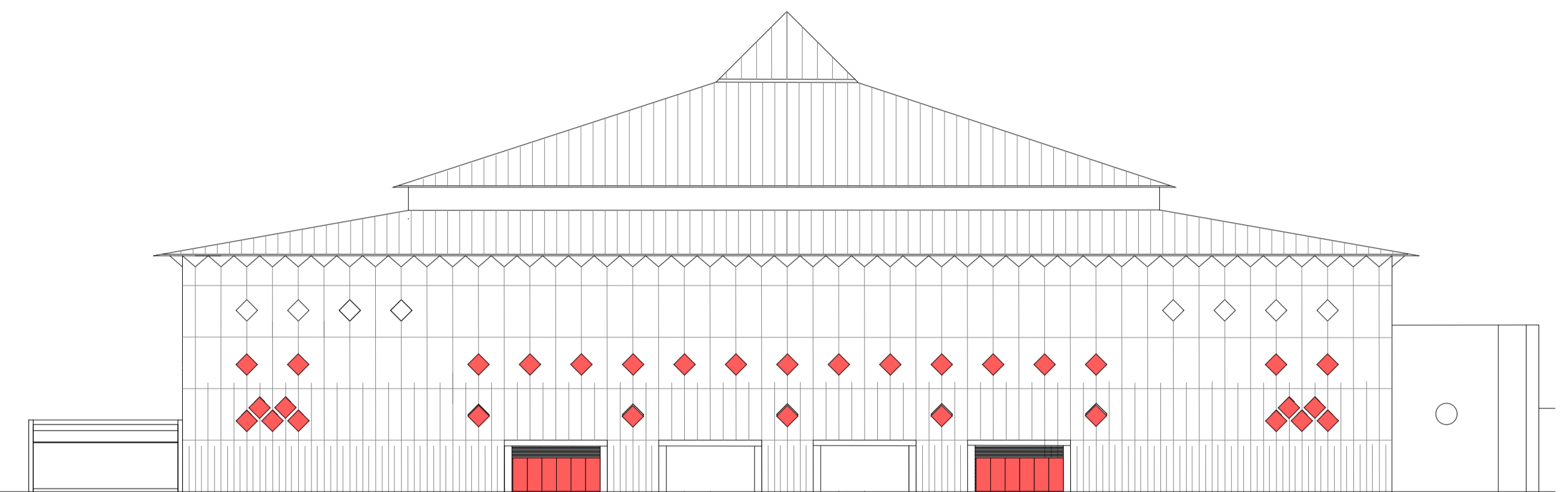
Alzado A- Este 30 Unidades



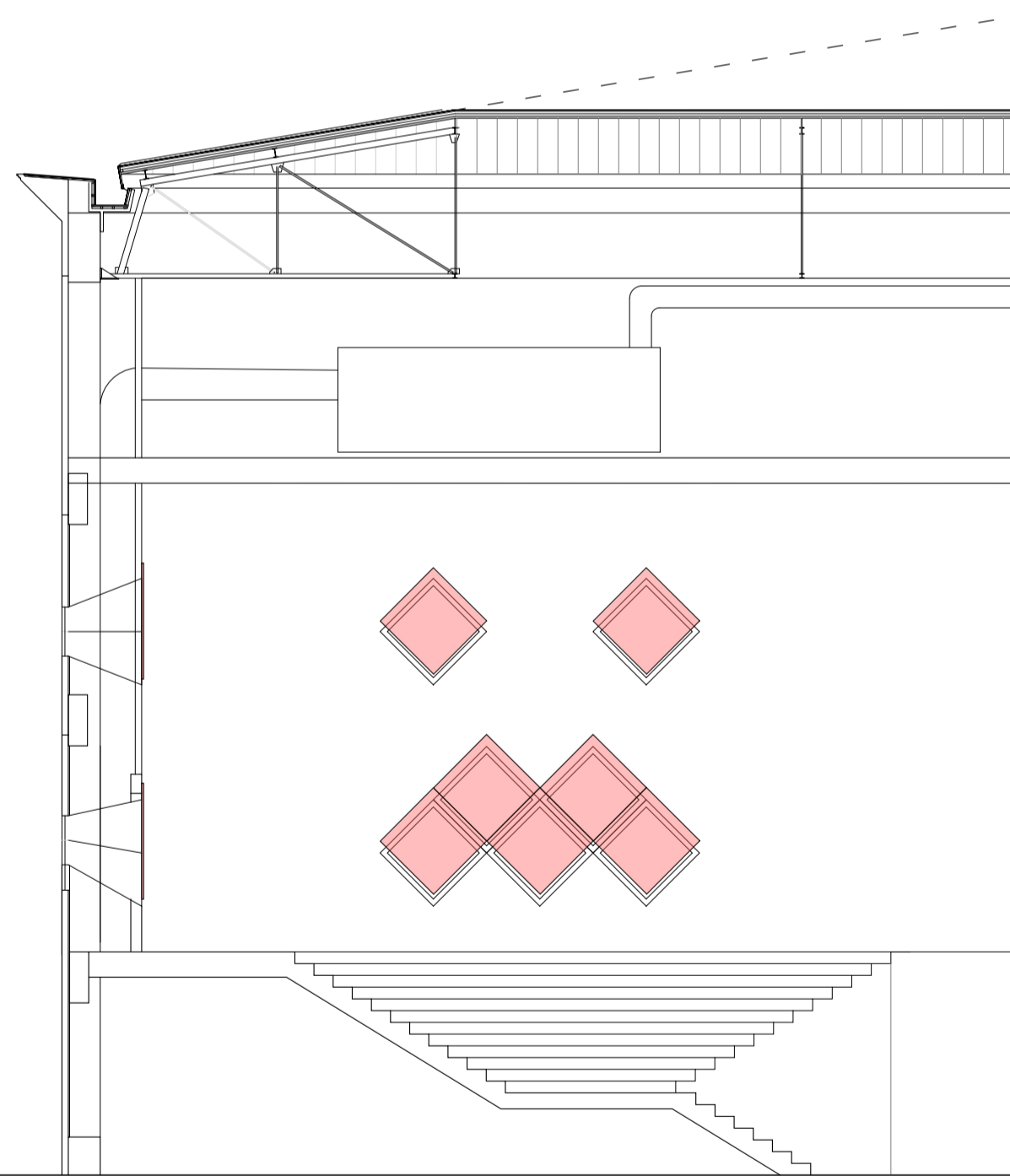
Alzado C- Norte 32 Unidades



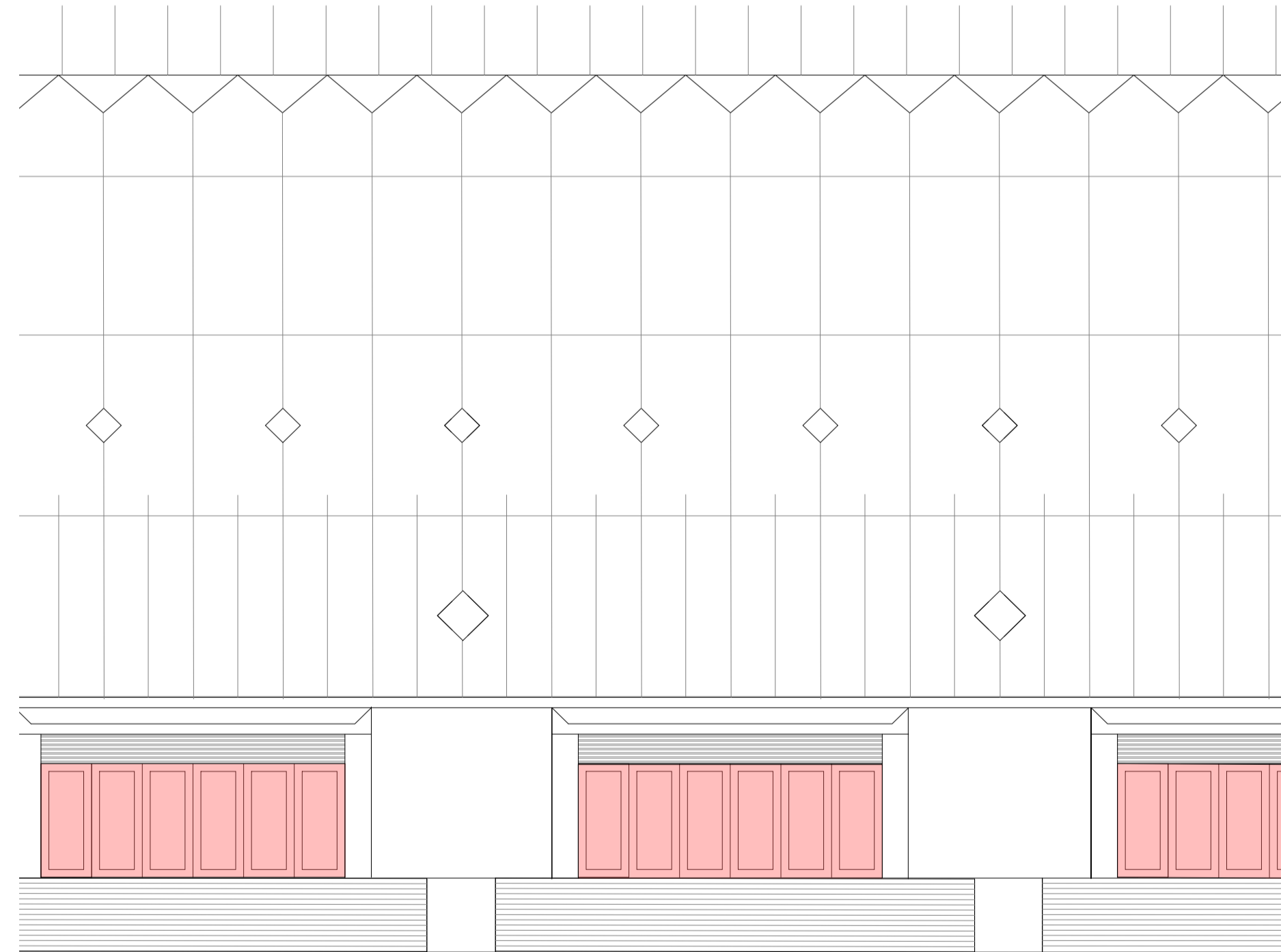
Alzado B- Oeste 40 Unidades



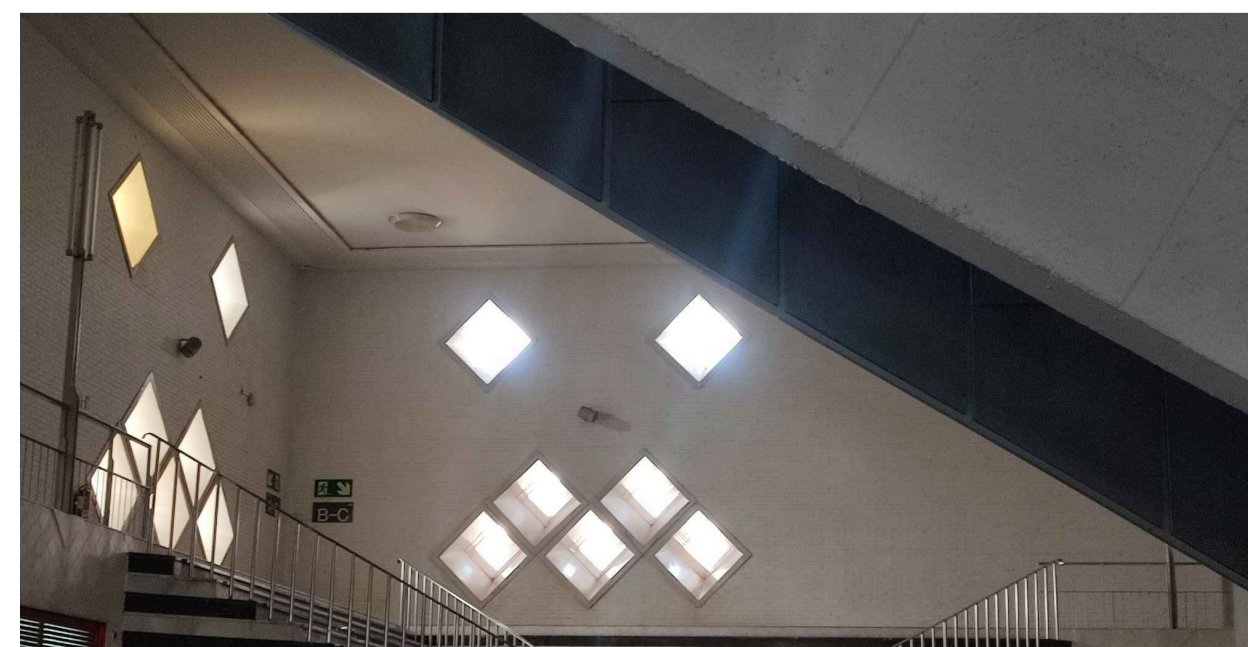
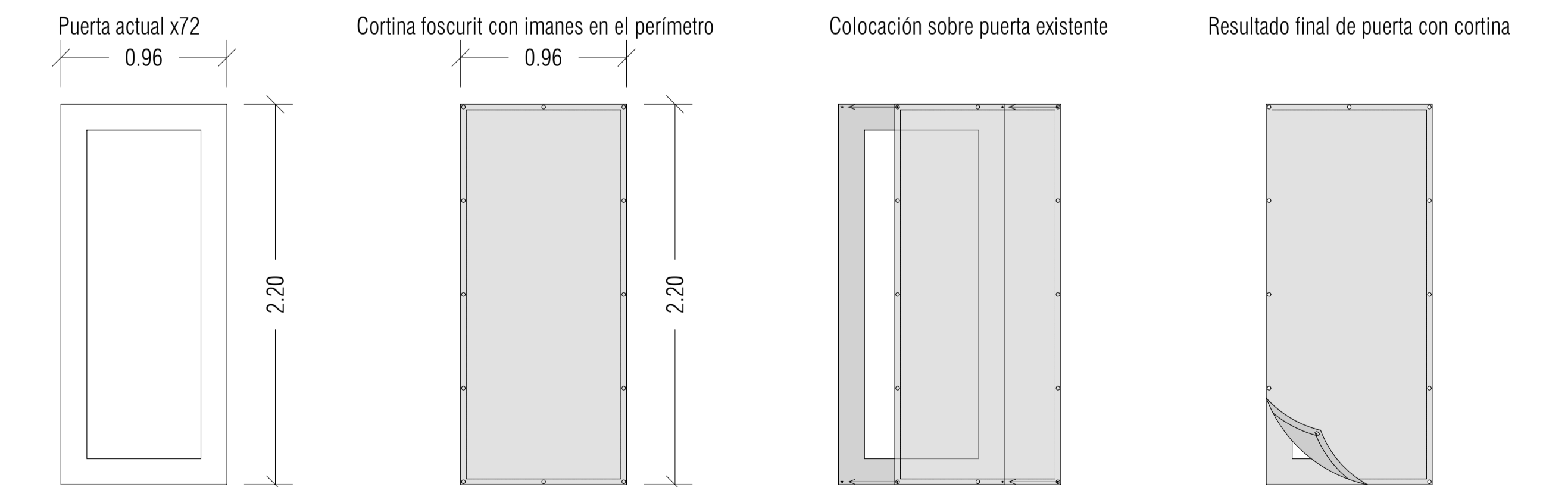
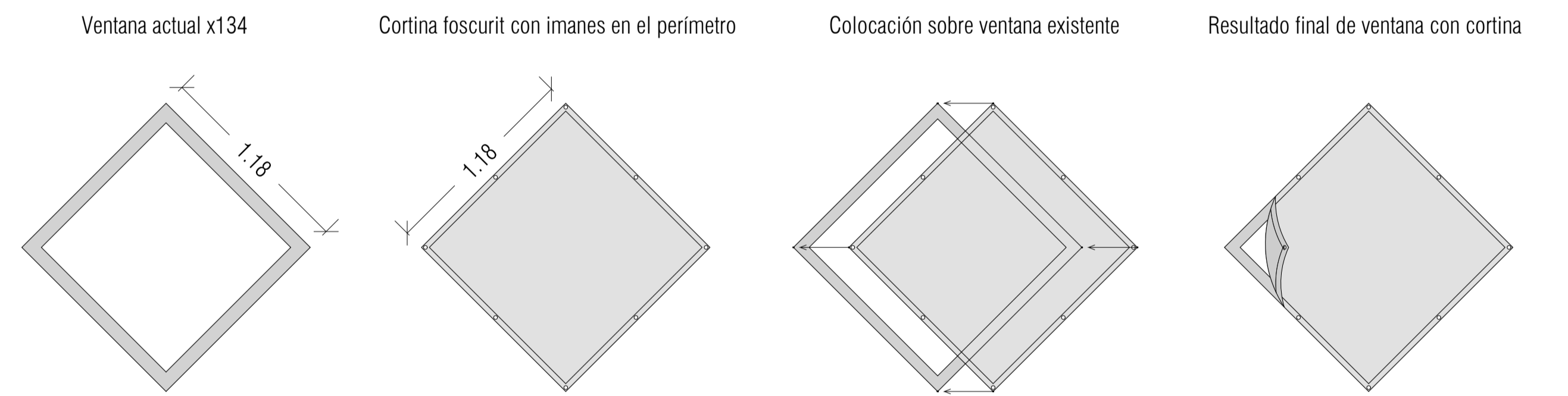
Alzado D- Sur 32 Unidades



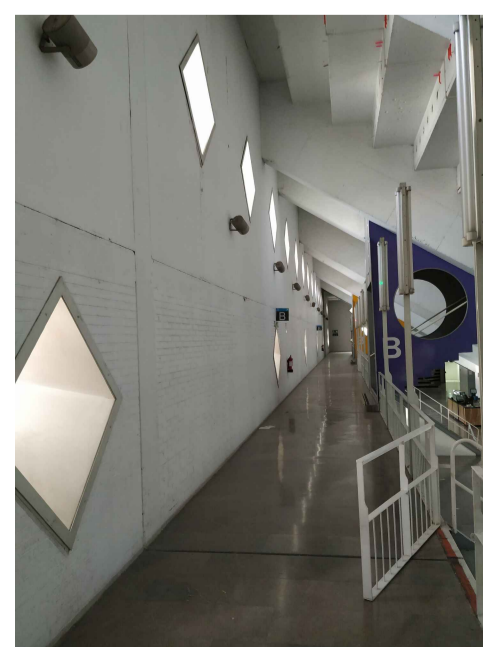
Sección Escala 1:100

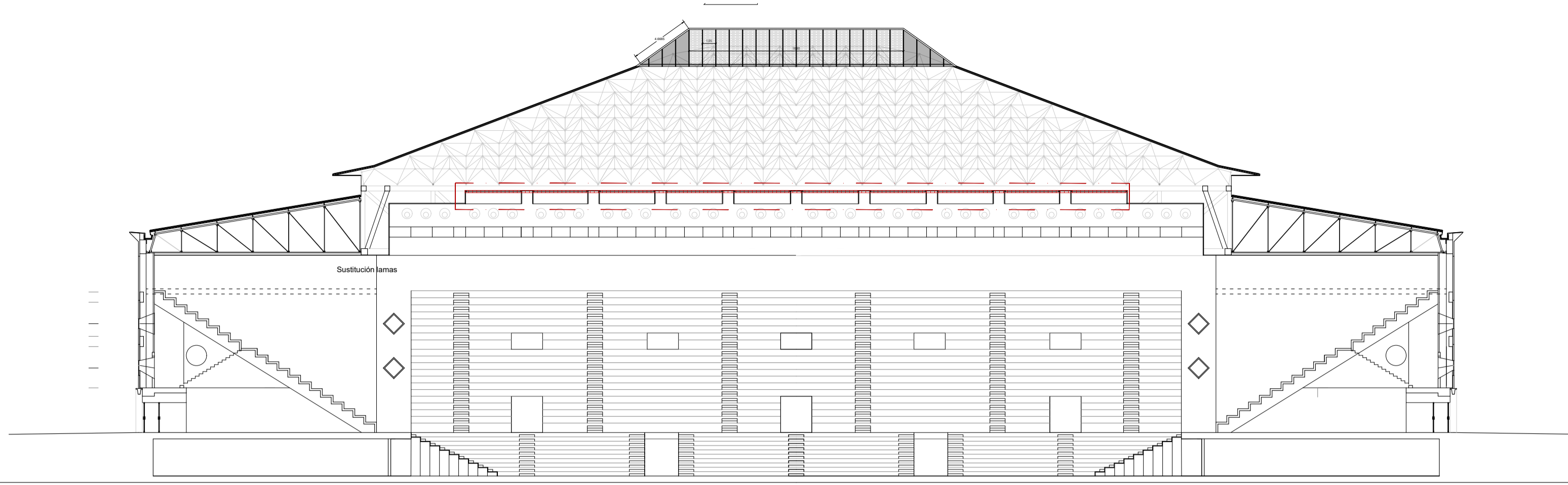


Alzado Escala 1:100

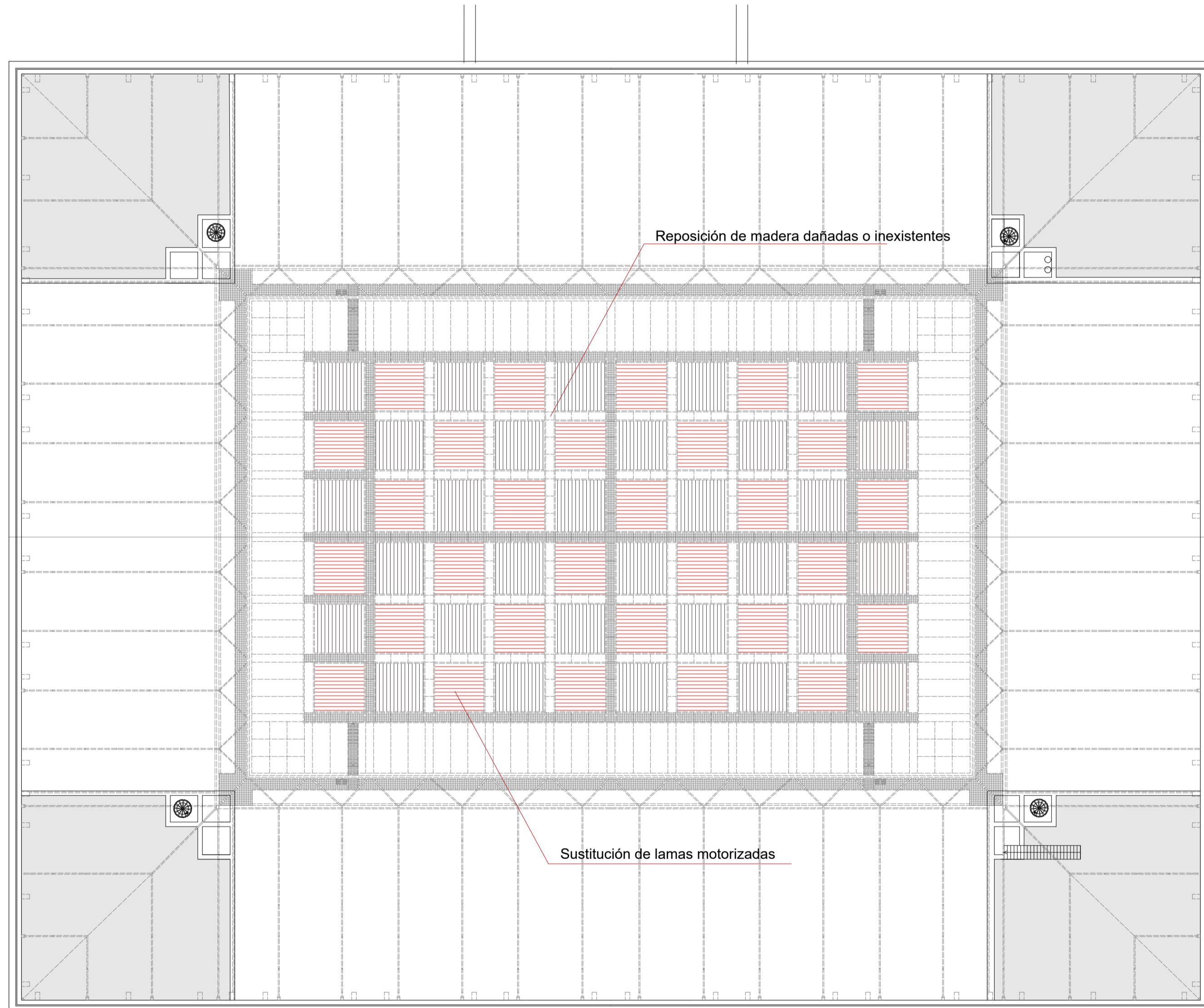


FOTOGRAFIA DEL INTERIOR DEL PALACIO MUNICIPAL DE DEPORTES DE GRANADA. © 2023





Sección Longitudinal
Escala 1:300

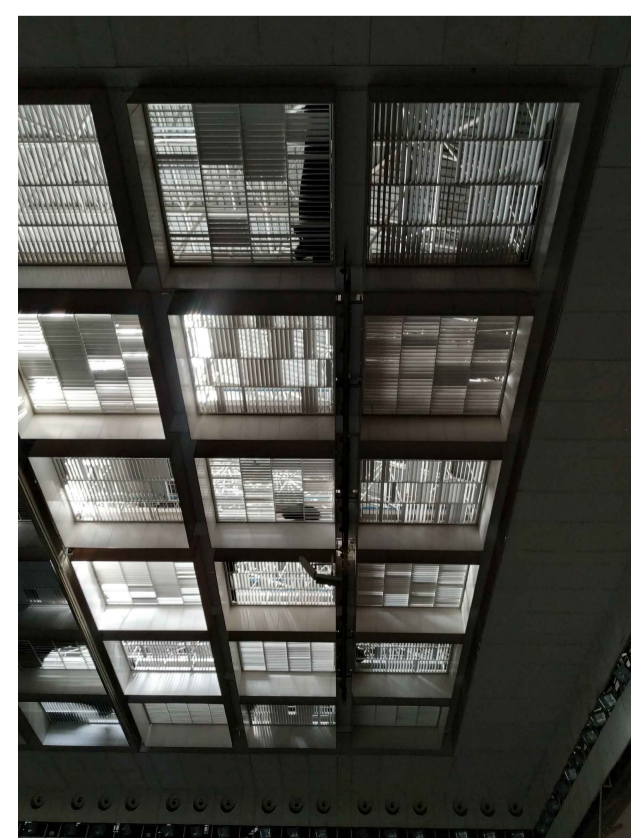


Planta Bajo-cubierta
Escala 1:300

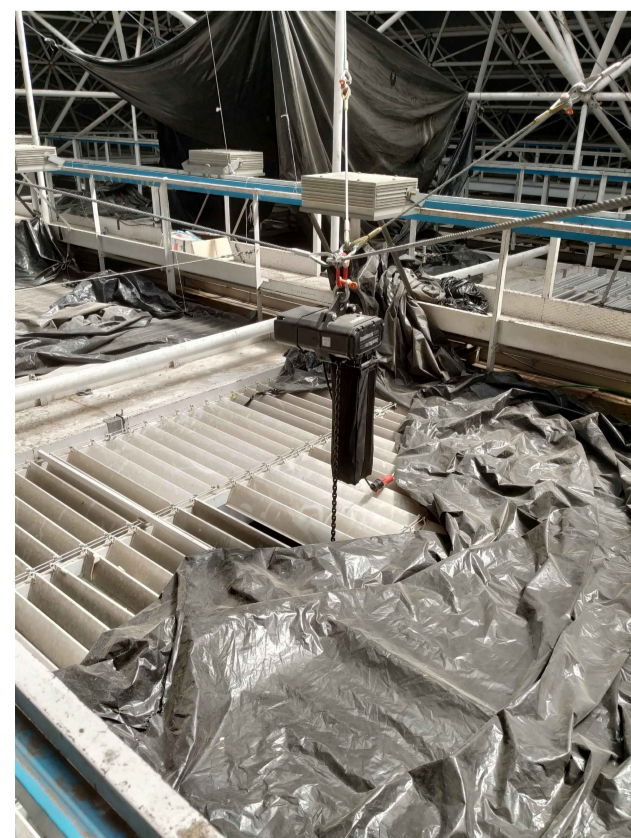
sector C

sector D

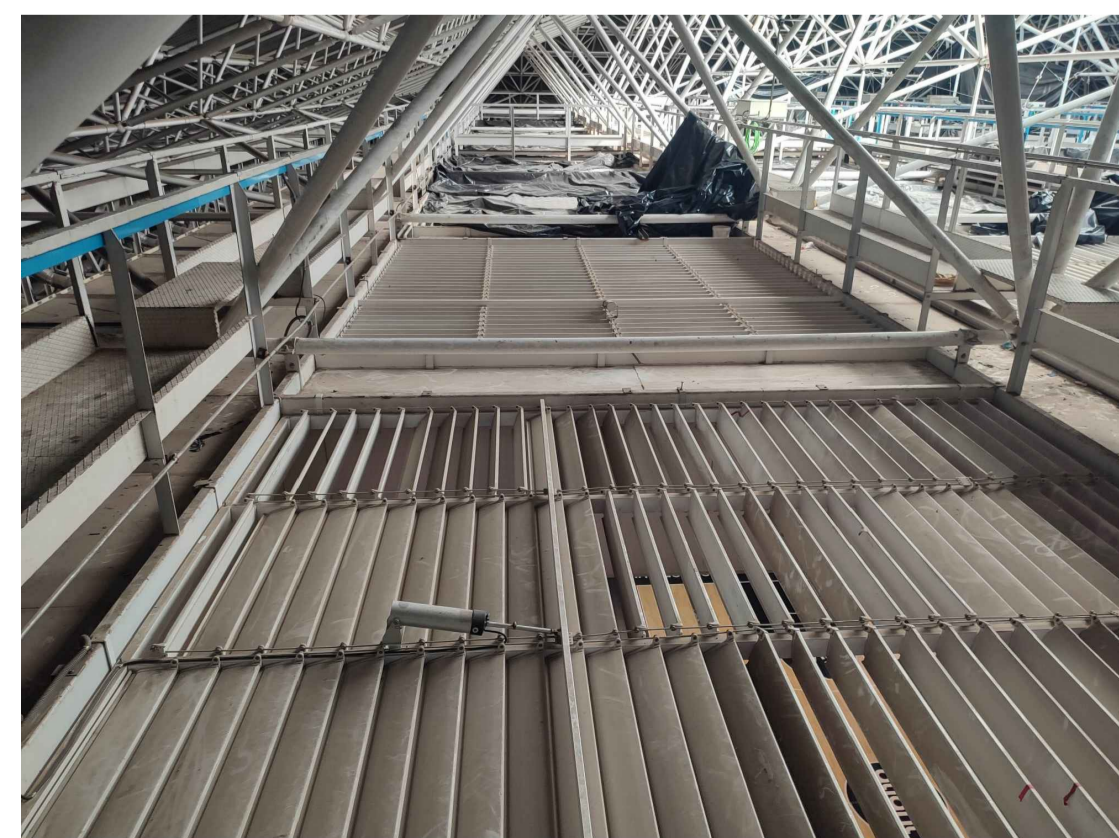
sector B



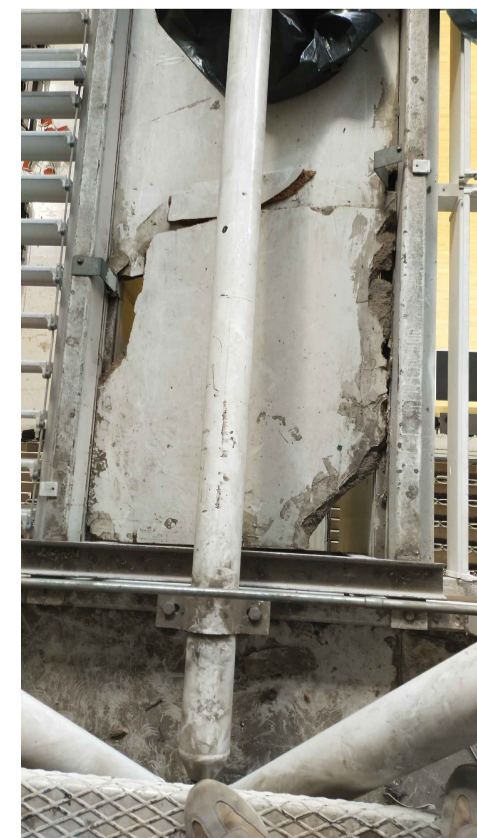
Vista inferior



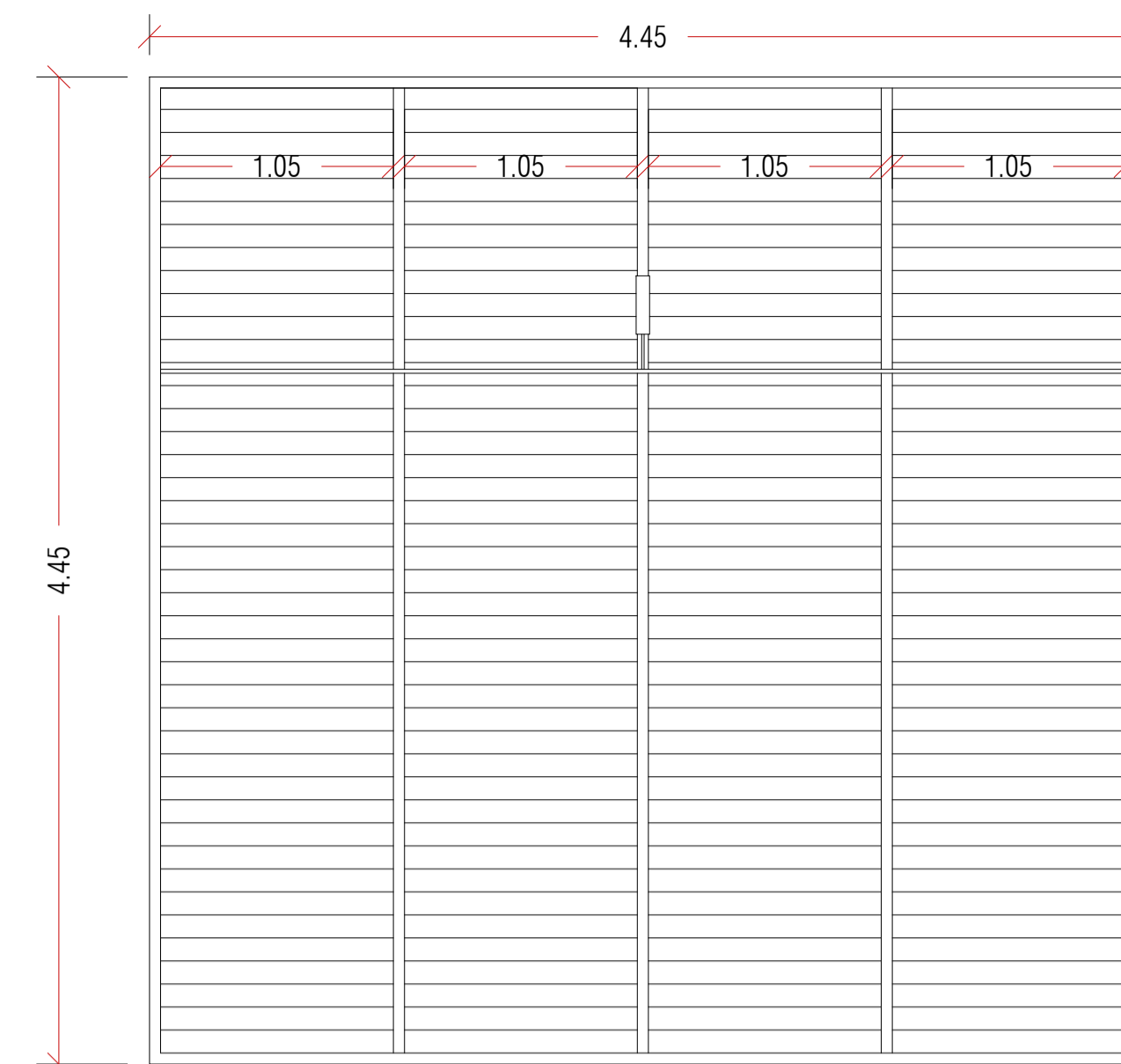
Vista superior



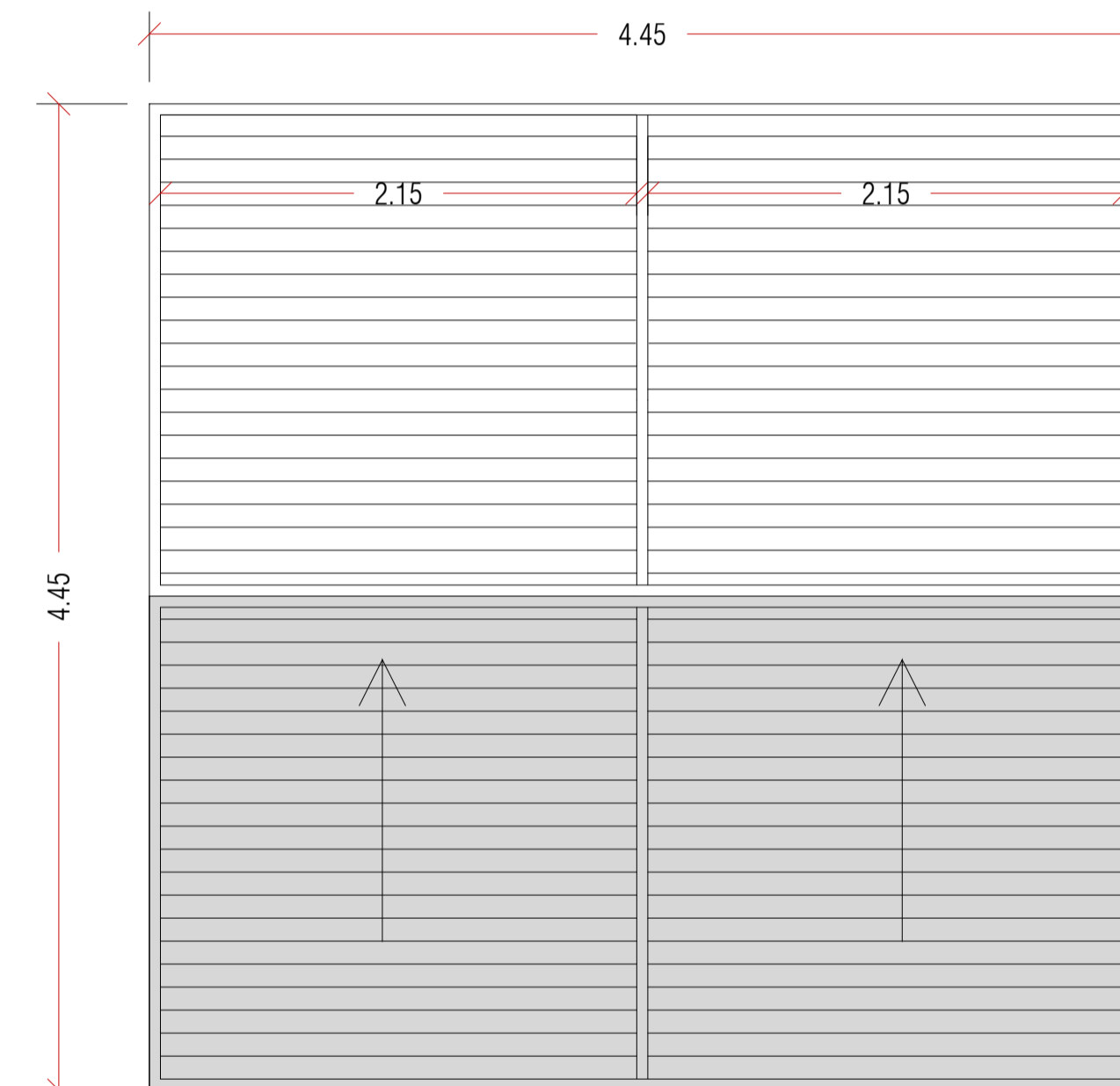
Vista superior



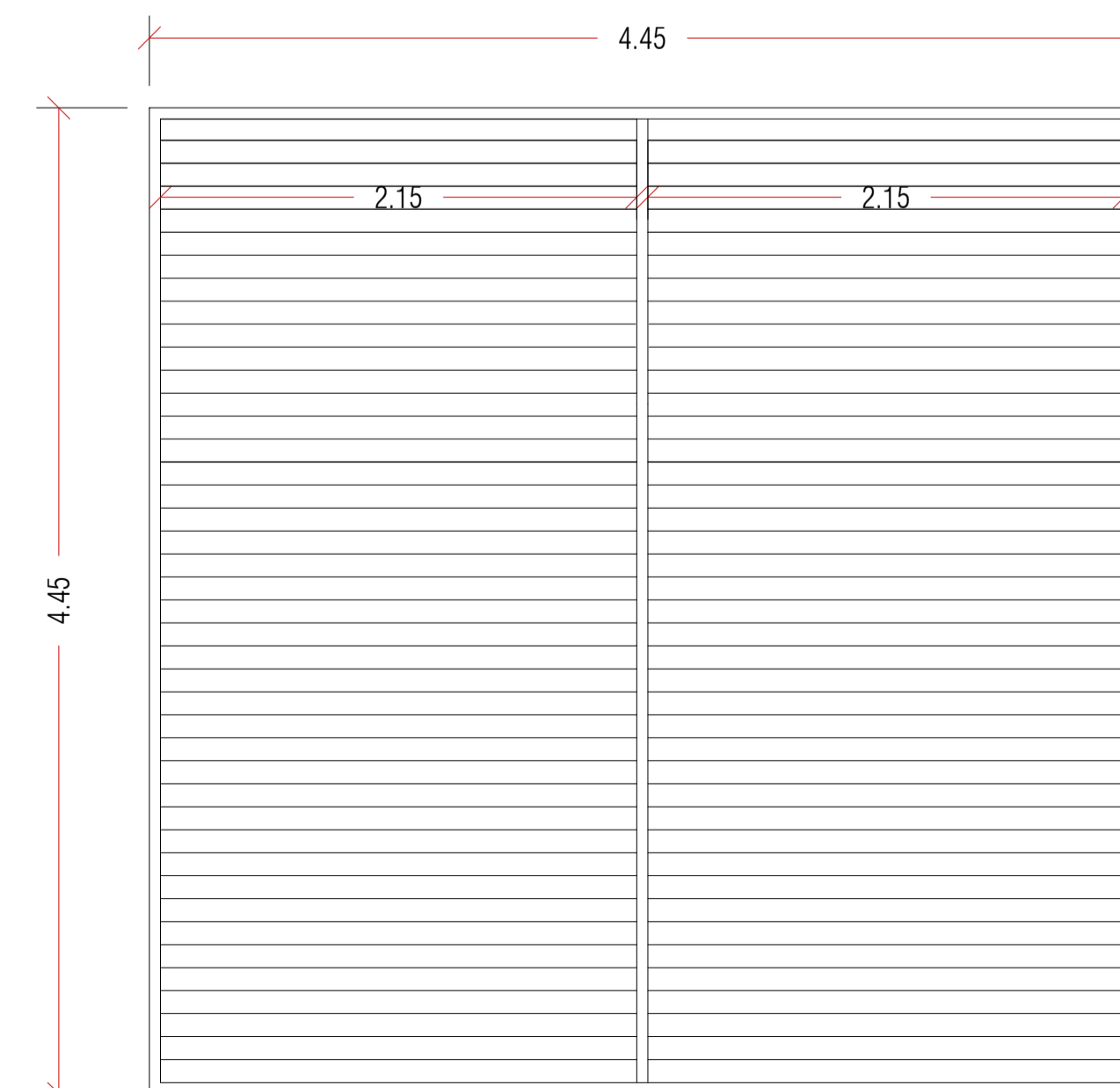
Maderas a reemplazar



Sistema de lamas actual
Escala 1:30

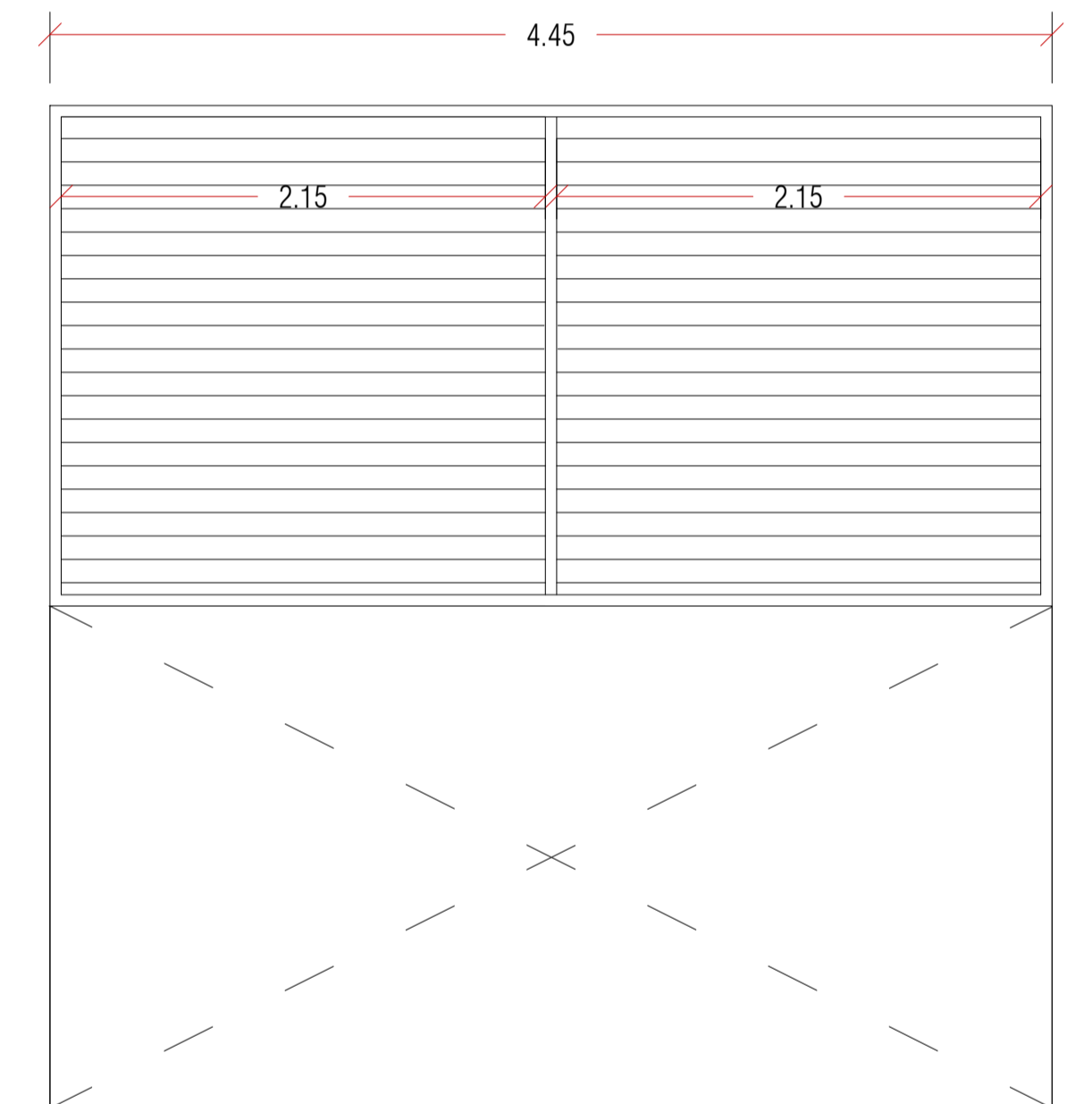
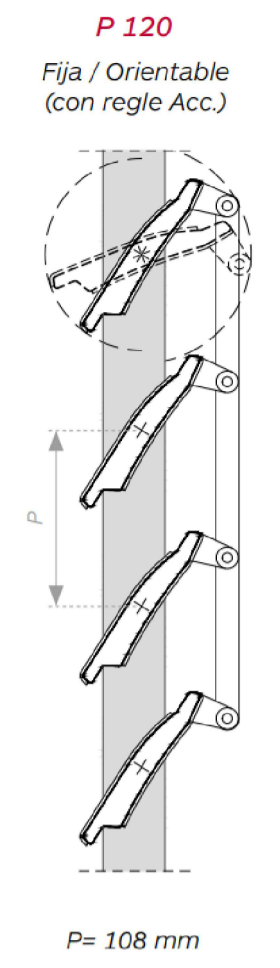


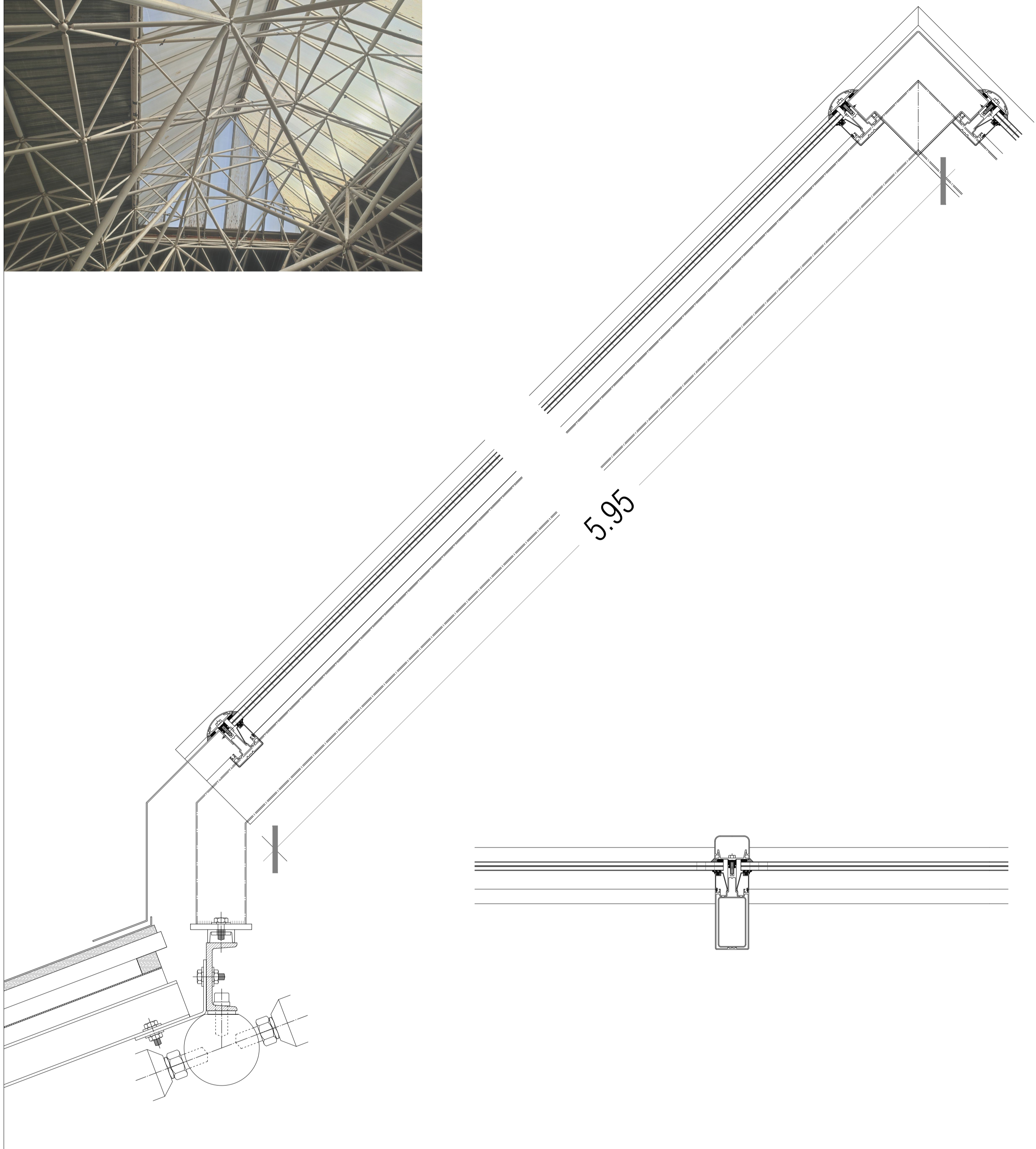
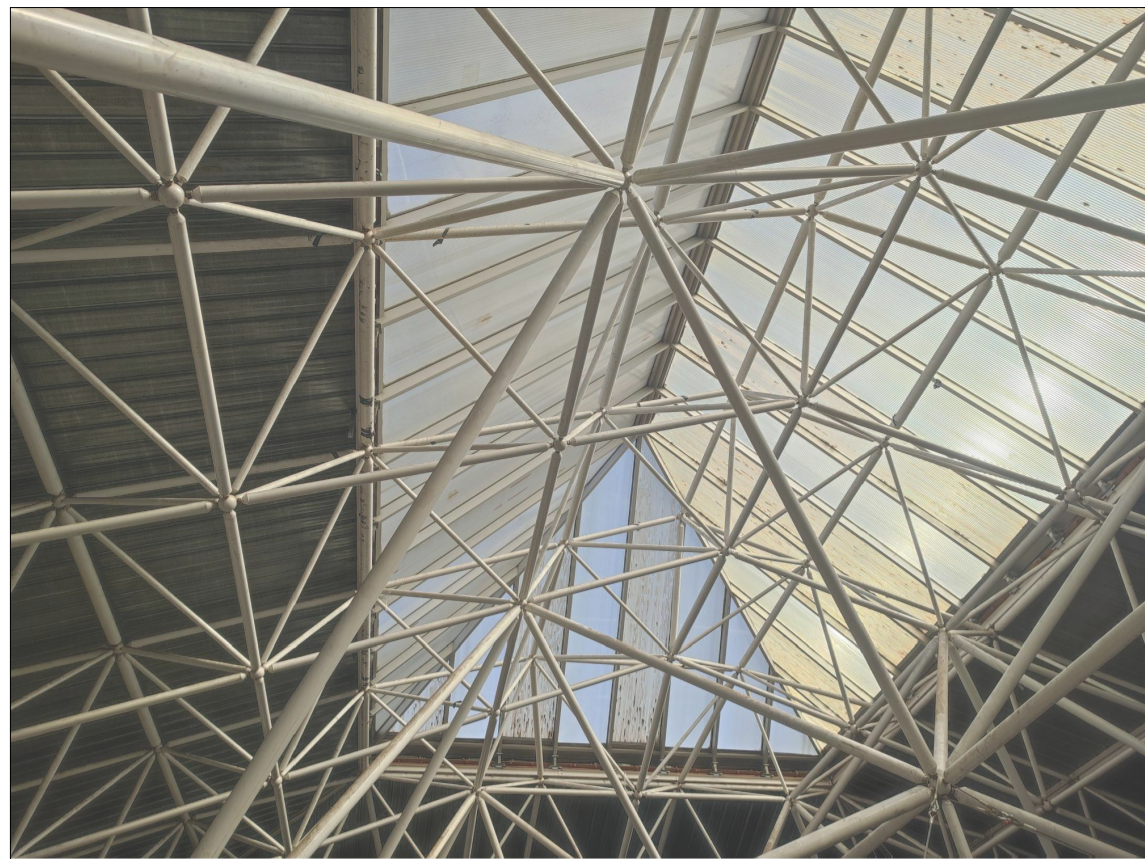
Sistema de lamas propuesto con corredera
Escala 1:30



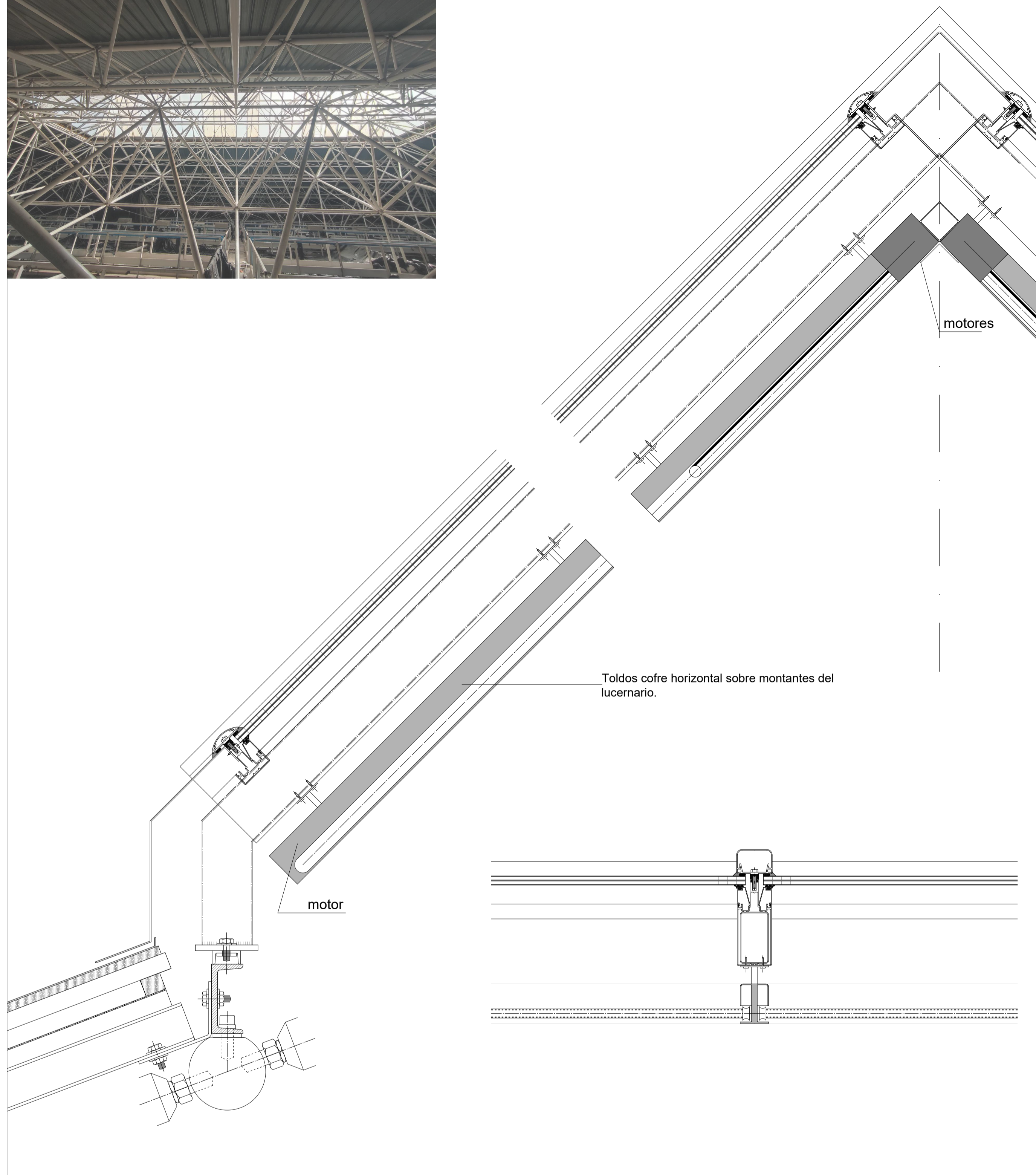
Sistema de lamas propuesto sin corredera
Escala 1:30

Secciones

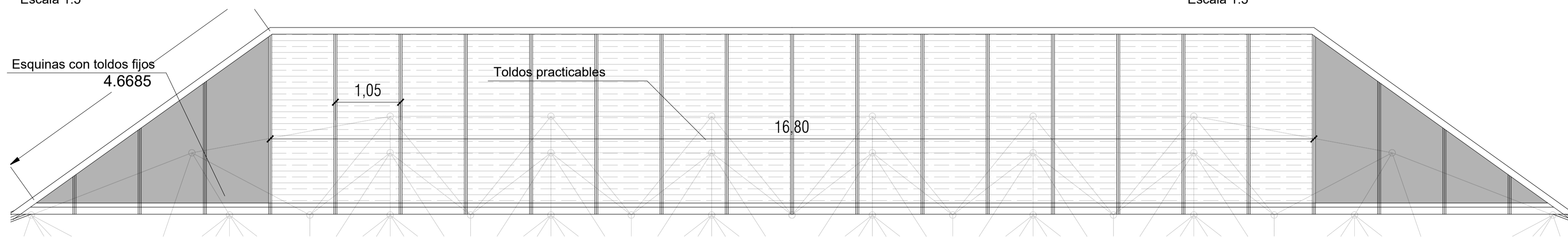




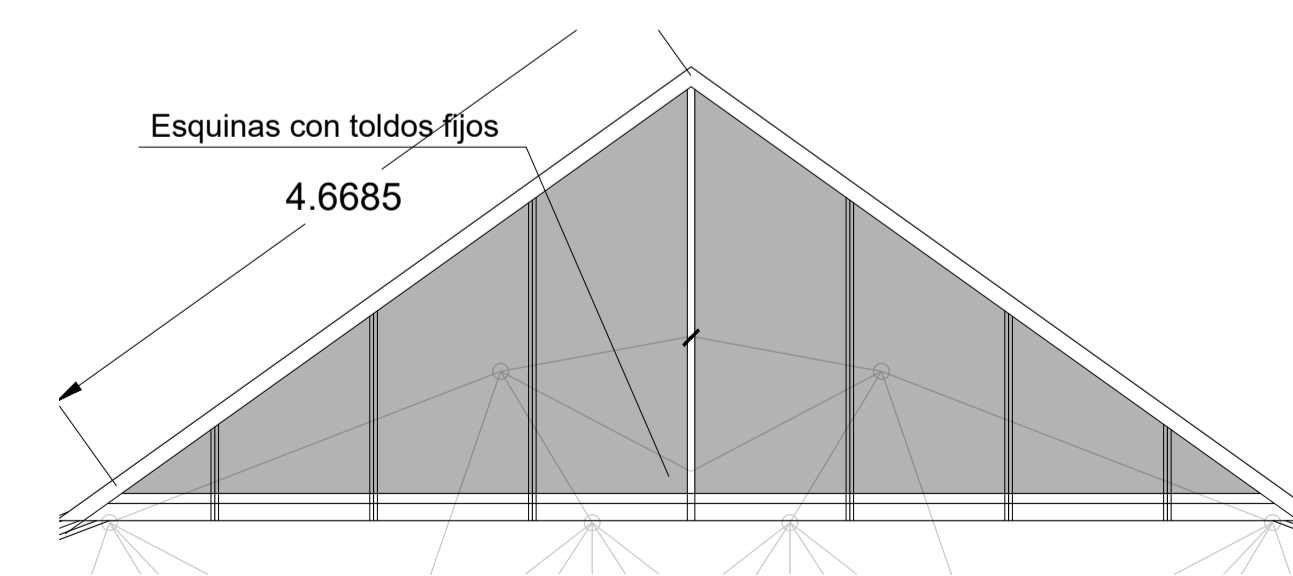
Detalles del lucernario estado actual
Escala 1:5



Detalles del lucernario propuesta toldo
Escala 1:5



Sección Longitudinal
Escala 1:50



Sección Transversal
Escala 1:50